



# Community Conservation Inc.

Presentation for Wisconsin Society for Conservation  
Biology Student Chapter

Nov 17, 2021, 6:30 pm central

Dr. Teri Allendorf

[communityconservation.org](http://communityconservation.org)



# Outline

- Our history
  - Projects
  - Belize Baboon Community Sanctuary
- Community conservation
  - What is community conservation?
  - What makes CC different?
- Current projects and future plans
  - Nepal
  - Myanmar
  - Malaysia



Myanmar Biodiversity Heroes Training 2019



## Me and my many hats – academic, consultant, practitioner

- Grew up in MT, now living in Mazomanie, WI
- Peace Corps Volunteer in Nepal
- PhD in Conservation Biology, University of Minnesota - people's perceptions of protected areas
- USAID Biodiversity Team as a AAAS Policy Fellow
- Consultant for USAID
- Met Rob Horwich in 2007
- Joined CC board 2011



Surkhet, western Nepal



## Me and my many hats – academic, consultant, practitioner

- Grew up in MT, now living in Mazomanie, WI
- Peace Corps Volunteer in Nepal
- PhD in Conservation Biology, University of Minnesota - people's perceptions of protected areas
- USAID Biodiversity Team as a AAAS Policy Fellow
- Consultant for USAID
- Met Rob Horwich in 2007
- Joined CC board 2011



Sarus crane, Lumbini, south central Nepal



## Me and my many hats – academic, consultant, practitioner

- Grew up in MT, now living in Mazomanie, WI
- Peace Corps Volunteer in Nepal
- PhD in Conservation Biology, University of Minnesota - people's perceptions of protected areas
- USAID Biodiversity Team as a AAAS Policy Fellow
- Consultant for USAID
- Met Rob Horwich in 2007
- Joined CC board 2011



Bardia National Park, southwestern Nepal



# Me and my many hats – academic, consultant, practitioner

- Grew up in MT, now living in Mazomanie, WI
- Peace Corps Volunteer in Nepal
- PhD in Conservation Biology, University of Minnesota - people's perceptions of protected areas
- USAID Biodiversity Team as a AAAS Policy Fellow
- Consultant for USAID
- Met Rob Horwich in 2007
- Joined CC board 2011



Mahotari, southeastern Nepal



## CC's track record

Since 1985, CC has had 27 projects in 15 countries...

- 97% are currently on-going
- 72% also created 44 new community conservation organizations
- Over 50% have shown an increase in targeted wildlife species
- 44% resulted in new protected areas



Nepal Community Wildlife Corridor Training April 2021



# Places and species

Belize – Black howler (“baboon”), West Indian manatee

Nicaragua – Olive ridley and leatherback turtles

Papua New Guinea – Matschie’s tree kangaroo

India – Golden langur, Asian elephant, Hoolock gibbon, Phayre’s leaf monkey

Costa Rica – Panamian red spider monkey

Peru – San Martin and Andean titi monkeys, yellow-tailed woolly monkey

Ghana – Geoffrey’s black and white colobus, olive colobus, Miss Waldron’s Red Colobus, white-naped mangabey, roloway monkey, white-collared mangabey, western red colobus

Rwanda – golden guenon

Nepal – Indian and Chinese pangolins, sloth bear, Asian elephant, tiger

Wisconsin – eagles, ornate box turtle, Kickapoo Valley Reserve



Eastern Hoolock Gibbon, Indawgyi Lake, Kachin State, northern Myanmar





# Community Baboon Sanctuary in Belize





JESSIE MARINA YOUNG

COMMONWEALTH POINTS OF LIGHT  
AWARDEE



Community Baboon Sanctuary, Bermudian Landing  
Belize District, Belize

Mailing Address:  
P.O. Box 1428, Belize City, Belize. Central America.

### CALL FOR CONSULTANCY

The Community Baboon Sanctuary Women's Conservation (CBSWCG) is seeking bids for Consultancy to **Revise and Update the Community Baboon Sanctuary 2013 – 2018 Management Plan to a 2020 – 2025 Management Plan.**

**The Community Baboon Sanctuary Women's Conservation Group's Vision is:** To be a leading grass roots world-class model promoting Belize's natural resources while preserving prime habitat for the movement of wildlife. The CBS will be the leading private community-based reserve working hand in hand with its members for improved economic conditions, social well-being, and will play a major role in providing alternative livelihood through conservation efforts

The CBSWCG is in the process of updating its current 5-year strategic management plan for the period 2020 -2025. We are seeking bids from consultants with experience in strategic planning and knowledge of the National Protected Areas Policy and System's Plan, National Biodiversity Strategy and Action Plan and any other relevant documents related to protected areas management with the inclusion of Climate Change.

#### Specifications:

Objective 1: Assess the level of implementation of the 2013-2018 management plans.

Objective 2: Revise and update management plans to 2020-2025 by incorporating new strategies.

Objective 3: Develop a Monitoring and Evaluation Plan

#### Deliverables

Copy of CBSWCG Strategic Management Plan 2020-2025, inclusive of the monitoring and evaluation plan (hard and electronic copy).

#### Duration of Consultancy

The total duration of the consultancy should not exceed 20 working days over a 3 months period.

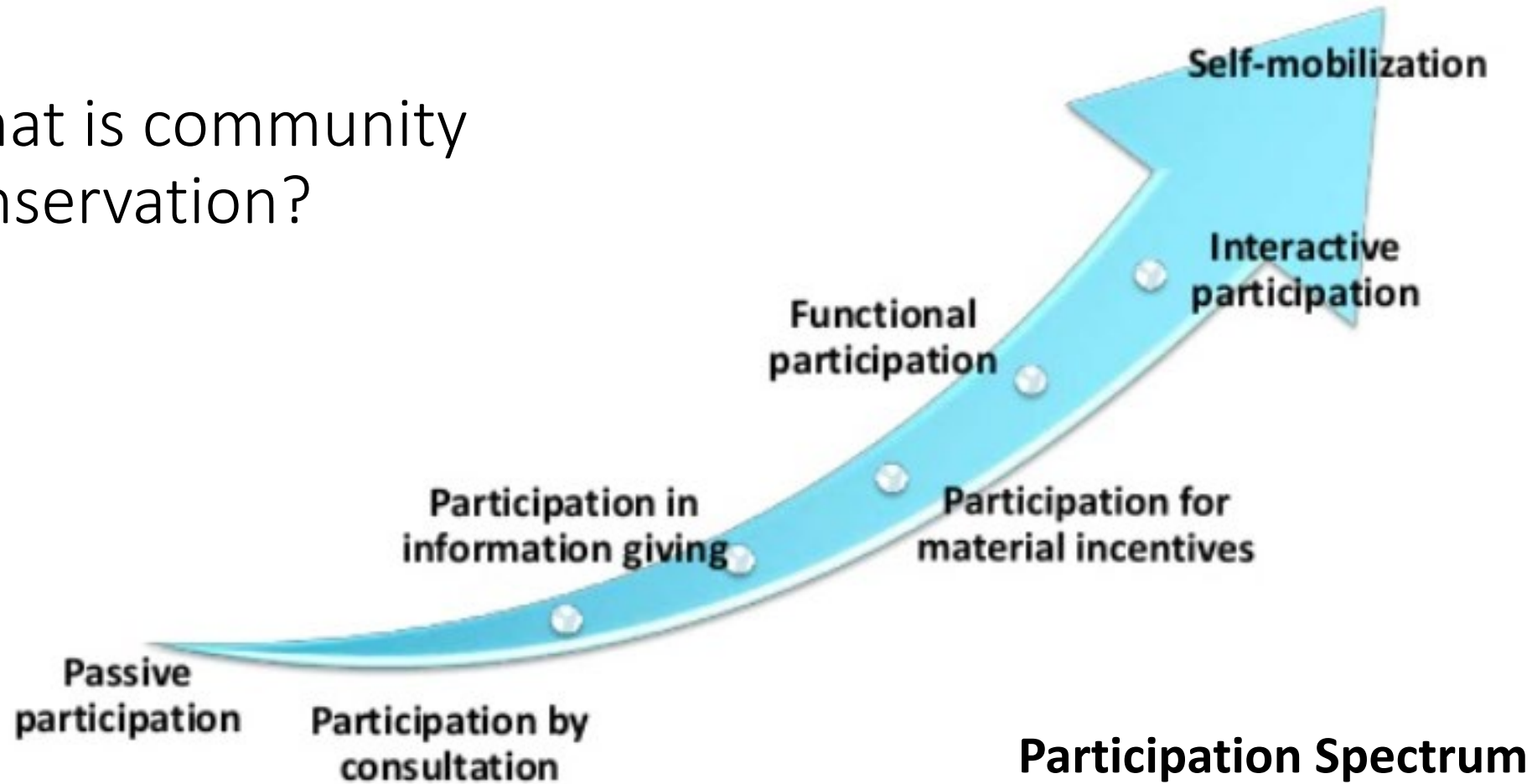
#### Bidding Instructions

Submit proposed plan including timeline and budget to achieve objectives along with CV with the necessary credentials that qualify you and your team to [baboonsanctuary@hotmail.com](mailto:baboonsanctuary@hotmail.com) by June 15<sup>th</sup>, 2020.

For more information, email [officemanager@cbsbelize.org](mailto:officemanager@cbsbelize.org).



What is community conservation?



**Participation Spectrum**



# COMMUNITY PARTICIPATION IN CONSERVATION

the continuum of local involvement

GOVERNMENT/  
INTERNATIONAL  
AUTHORITY



COMMUNITY  
AUTHORITY

Top-down, outside management

Consult communities informally

Consult communities formally

Local advisory committee

Co-management

Community management

IDEAL




# What makes CC different?

Our work is premised on:

- Recognizing people's values and motivations
- Providing access to information
- Supporting a process of building capacity
  - technical
  - governance

## Value of Biodiversity

- Direct Economic Value
- Indirect Economics value
- Amenity value
- Option value
- Existence value



# What makes CC different?

- People support conservation
- People benefit in many ways from participating in conservation
- Benefits change over time
- Knowledge makes a difference



## Motivations of the community forest protection forces of the Manas Biosphere Reserve in Assam, India

Teri D. Allendorf<sup>a</sup>, Raju Das<sup>b</sup>, Arnab Bose<sup>b</sup>, Bubon Ray<sup>b</sup>, Kingchuk D. Chaudhuri<sup>b</sup>, Sophie Brock<sup>c</sup> & Robert H. Horwich<sup>c</sup>

---

### Why did you join the project?

	%
Conservation	75
Economic (supplemental income)	35
For a job (primary income)	16
Self-motivation	13

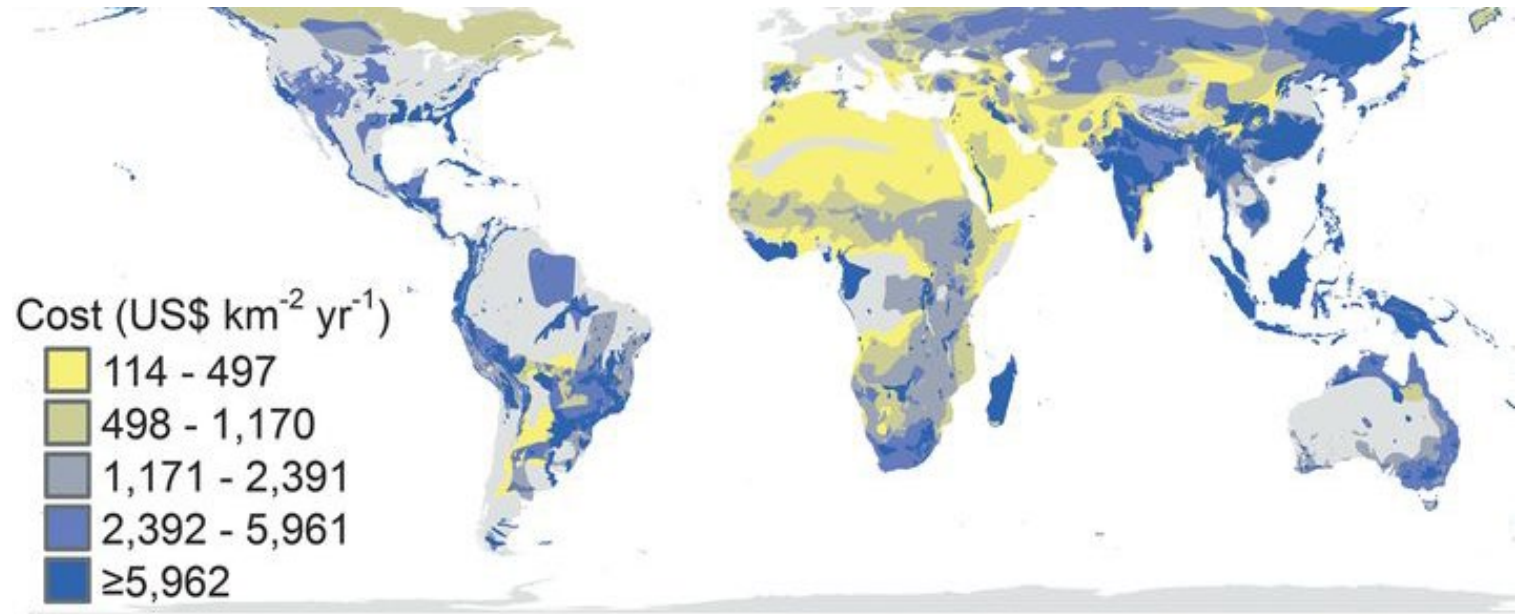
### What are the benefits to you of being involved?

Extraction	69
Friends	69
Discipline	64
Environmental knowledge	35
Interactions	10
Job	8



## Invest in communities

Community projects cost \$12-25 per square kilometer compared to traditional projects costing more than \$900 per square kilometer.



Geographic patterns in the annual cost for conservation actions for 1,097 globally threatened bird species assuming that actions for each species are independent.

**Donal P. McCarthy et al. Science 2012;338:946-949**



# Conservationist in every village



Shanker Luitel,  
eastern Nepal



Laxmi Singh, western Nepal

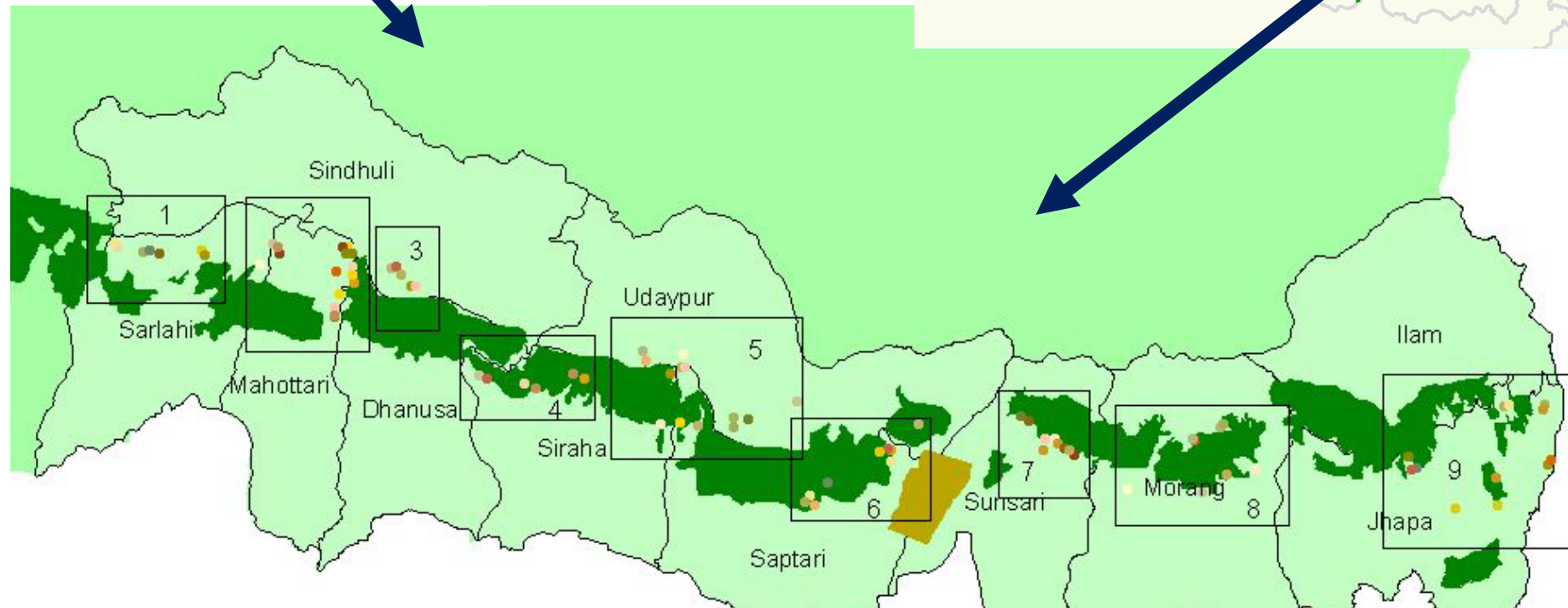
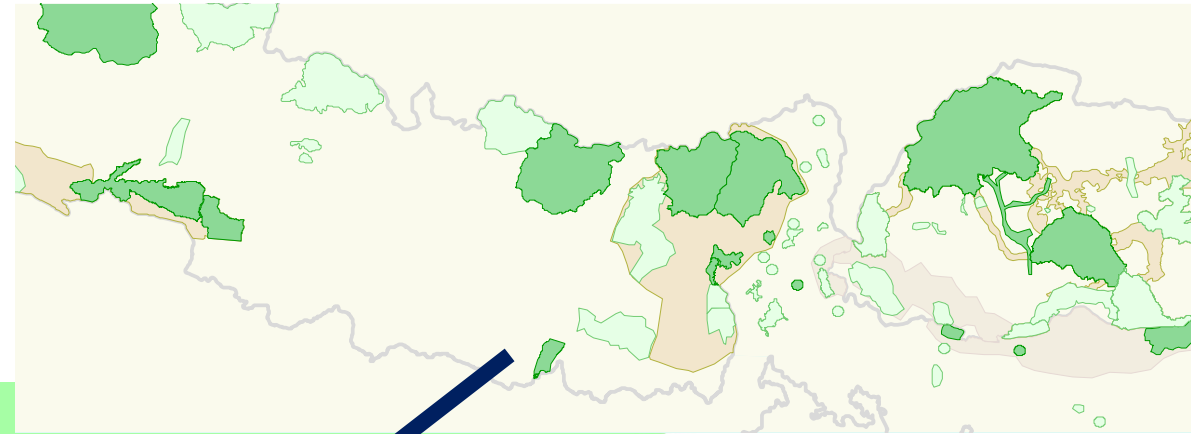
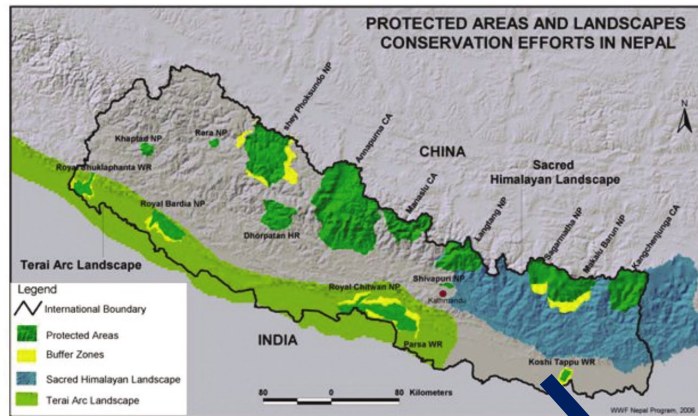


Khine Khine Swe, director of Friends of  
Wildlife, Myanmar





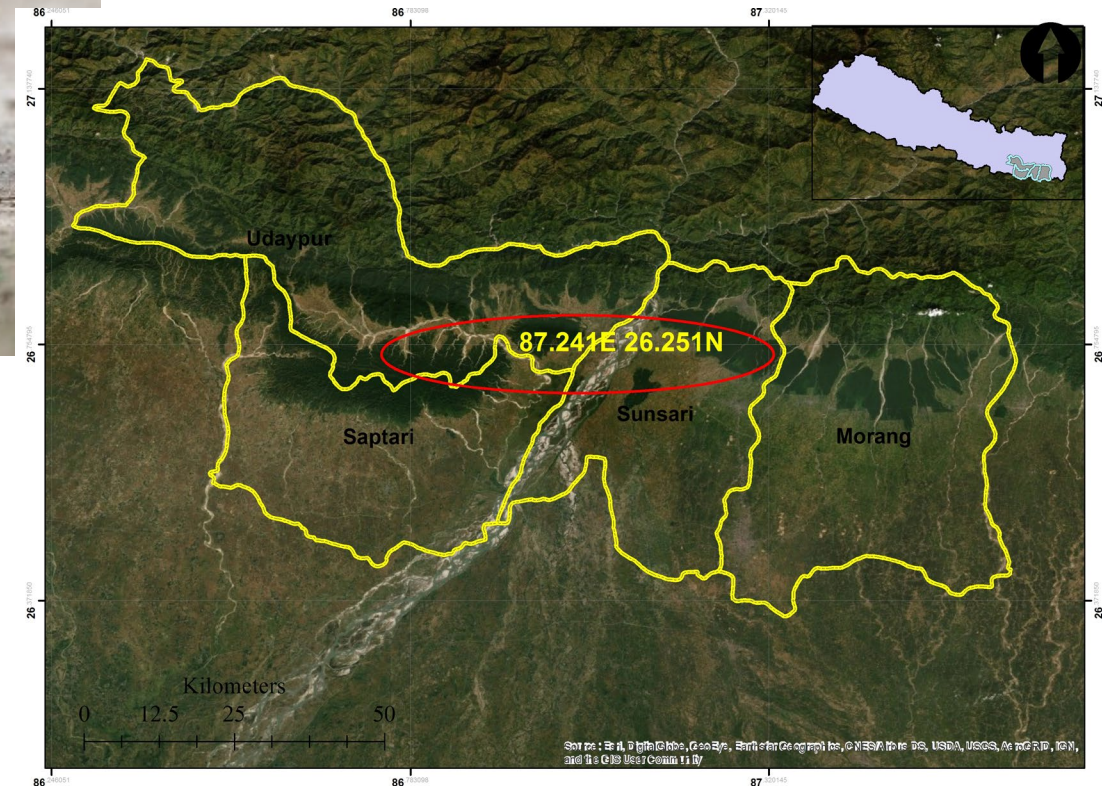
# Nepal Community Wildlife Corridor





Ansar Khan/Life Line for Nature Society

Pangolins, sometimes known as scaly anteaters, are mammals of the order Pholidota. The one extant family, Manidae, has three genera: Manis, Phataginus and Smutsia. Manis comprises the four species found in Asia, while Phataginus and Smutsia include two species each, all found in sub-Saharan Africa.



# Biodiversity Heroes Trainings in Myanmar



Protecting Myanmar's wildlife through community-based  
biodiversity conservation and ecosystem management.



# Biodiversity Heroes

3 annual trainings at Indawgyi Lake training site

83 community leaders

21 of 27 protected areas

7 protected areas have on-going projects with communities, primarily community forestry

additional requests for training



Friends of Wildlife

[About FOW](#) [Our Work](#) [Contact](#)

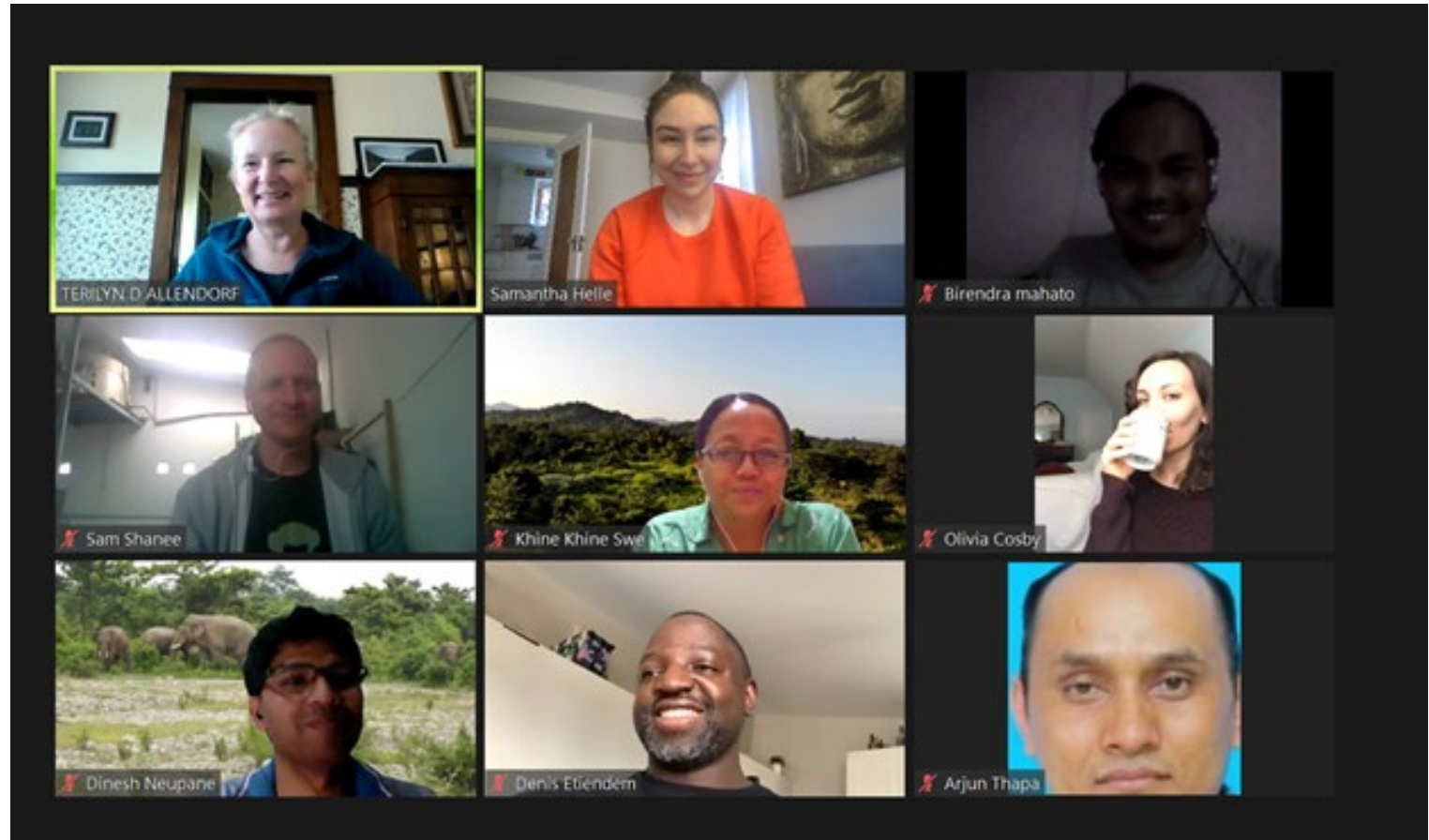


# Lanjak Entimau Wildlife Sanctuary (LEWS) in Borneo, Malaysia



# What does the future look like?

- Continue field projects
- Support to partners
- Support students



# What does the future look like?

Support to students who want to engage with communities:

Olivia Cosby in Malaysia, Smithsonian Institution

Sam Helle in Nepal, University of Wisconsin



# Thank you!

For more about CC:  
[communityconservation.org](http://communityconservation.org)

For more about me:  
[sites.google.com/site/  
teriallendorf](https://sites.google.com/site/teriallendorf)

